

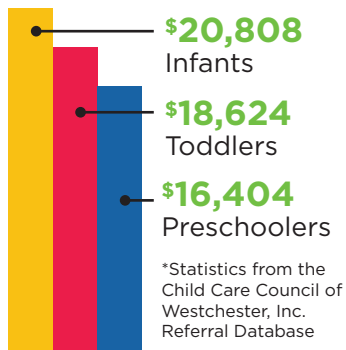
2018 Westchester Parent Child Care Survey

Parents make accommodations, not choices.* Lack of affordable, quality child care options drives families into debt and forces them to sacrifice other necessities.

*Language courtesy of Child Care Aware of America

Child Care is Expensive & Too Few Families Access Subsidy

Average cost of full-time child care:*



Child Care Subsidy: More funding, education and assistance needed

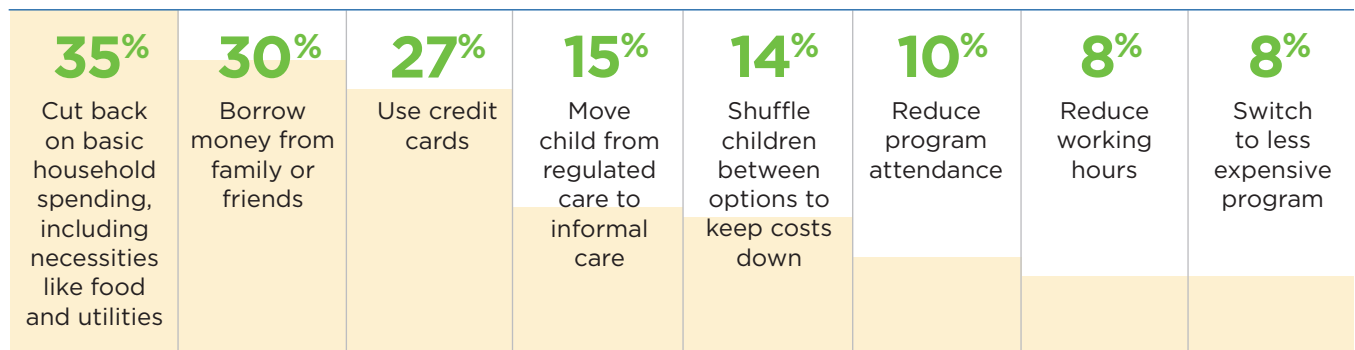
130 responding families are eligible for subsidy

68 of the 130 receive child care subsidy

The Council's Subsidy Support Specialist helped nearly 1,000 parents apply for child care subsidy from 2015 to 2018. In Westchester County 12,400* children under six years old are eligible for subsidy. **Thousands of eligible parents do not know it's available.**

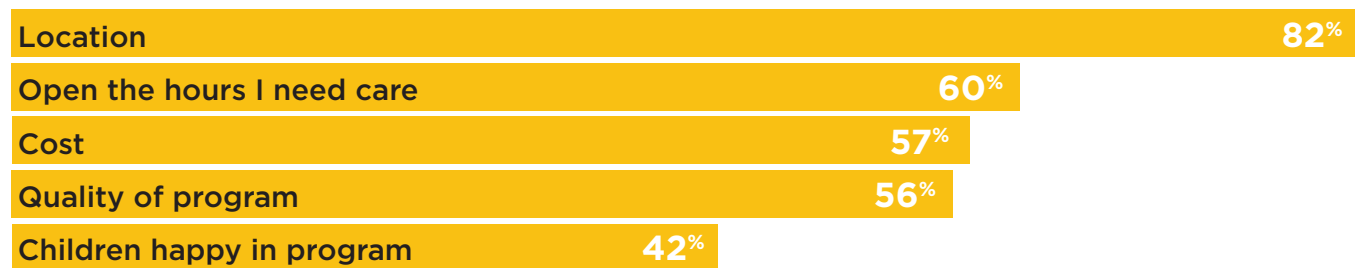
*Urban Institute research report on Westchester child care.

48% of families had trouble paying for child care in the last 6 months.



How Parents Choose Child Care: Convenience Over Quality

Top 5 factors cited by parents



Increased Impact on Employment!

58% of all respondents say child care issues impact their work.



“I left my job because the cost of child care was comparable to my salary”

“No longer working due to the expense”

“I was out for more than 30 days”

Parents have taken the following actions because of child care:

- Turned down a job
- Chose a specific job
- Reduced working hours
- Left a job
- Delayed returning to work

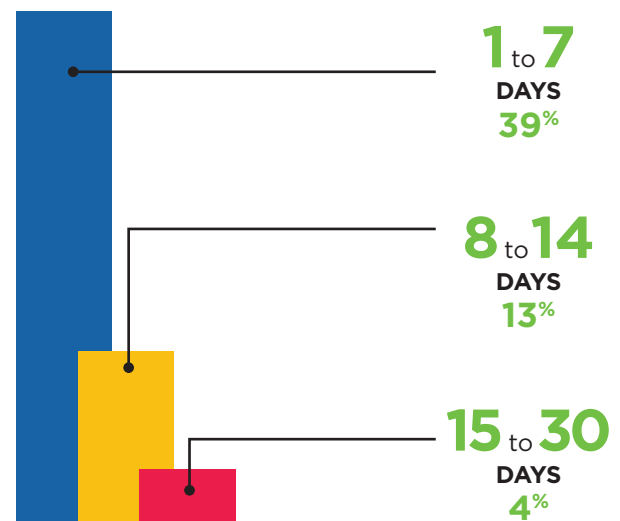
Specific reasons parents miss work:

51 working parents worried that their children were not safe or not receiving the best care

127 working parents did not have someone to watch their child or had unreliable care

55 parents were not always able to pay for child care

How many days of work did you miss in the past 12 months due to child care issues?




Is child care an important part of your decision to work where you do? → **58% yes**

479 Families Responded

Working parents from all income levels

73% make below \$60k

27% earn more than \$100k per year

57% Two-parent families 

43% Single-parent families 

95% At least 1 parent working outside the home

Family Income

